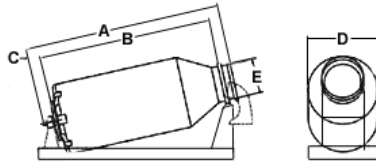


CCR REPLACEMENT BARREL



FEATURES


- Proven over 25 years of in-plant operation to eliminate corrosion problems
- Patented vortex pump-out system with no internal moving parts
- Improved heat retention for energy savings and more uniform processing
- Unique Canbar fin design provides gentle paddle-like processing action



INSTALLATION DIMENSIONS

MODEL	A	B	C	D	E	WEIGHT
CCR 200	6070 19' 11"	5283 17' 4"	406 1' 4"	2490 8' 2"	1143 3' 9"	8,200 kgs
CCR 300	6934 22' 9"	6147 20' 2"	406 1' 4"	2490 8' 2"	1143 3' 9"	8,600 kgs

CAPACITY CHARTS

MODEL		NOMINAL TANNING CAPACITY			
		Hide and Skin Load % Float		Hide and Skin Load % Float	
	Capacity	50%	100%	150%	200%
CCR 200	12,000 Liters 3,470 U.S. Gals	8,000 kgs 17,635 lbs	6,000 kgs 13,225 lbs	4,800 kgs 10,580 lbs	4,000 kgs 8,820 lbs
CCR 300	15,500 Liters 4,095 U.S. Gals	10,330 kgs 22,770 lbs	7,750 kgs 17,085 lbs	6,200 kgs 13,665 lbs	5,160 kgs 11,735 lbs

Now you can have all the advantages of a truly modern Fiberglass processor mixer without the expense of tearing out and replacing your existing machine with its corrosion prone steel drum. The Canbar CCR is a direct replacement for your Challenge steel drum. Just drop it into place, connect your drive chain, and you are ready to run.

